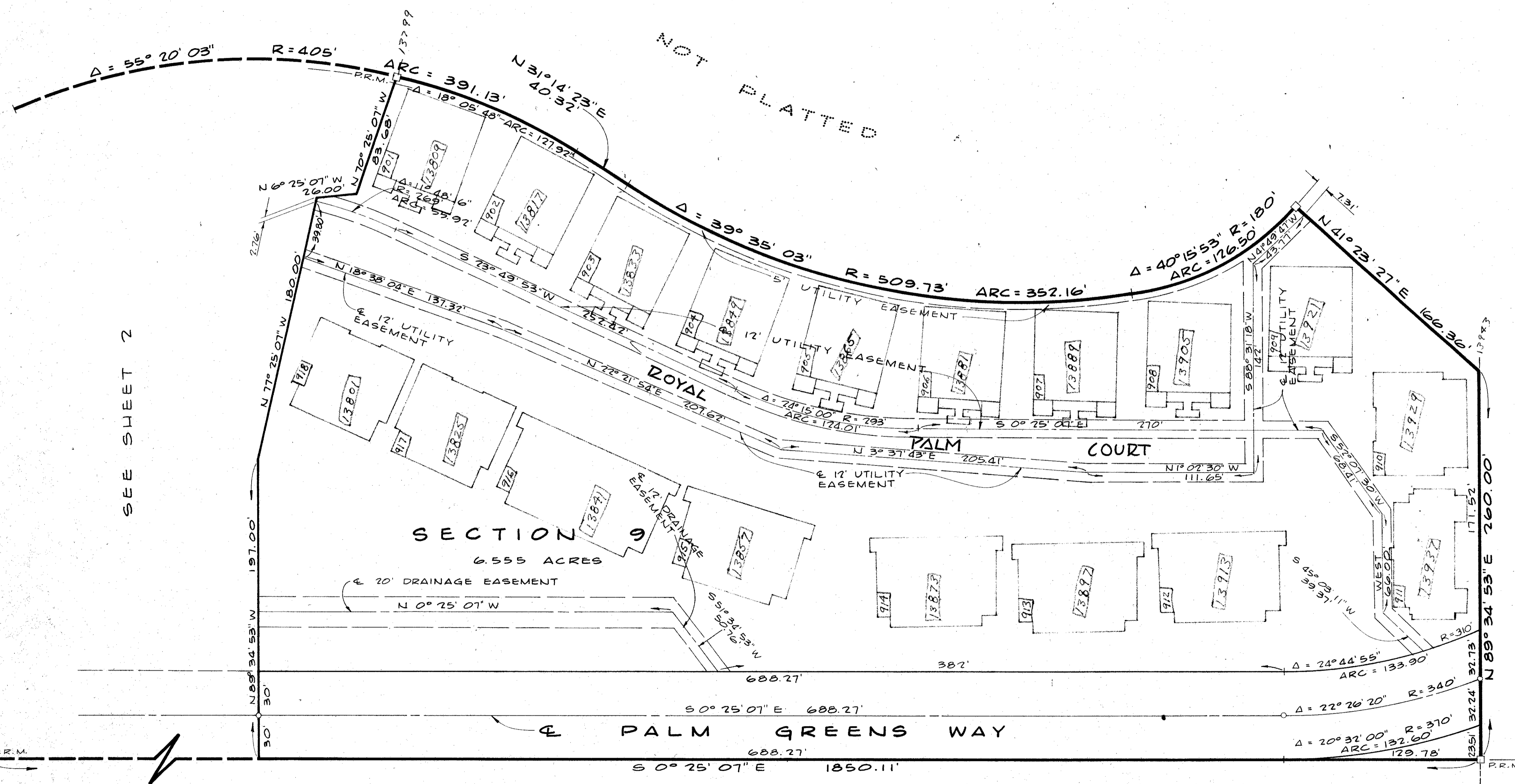
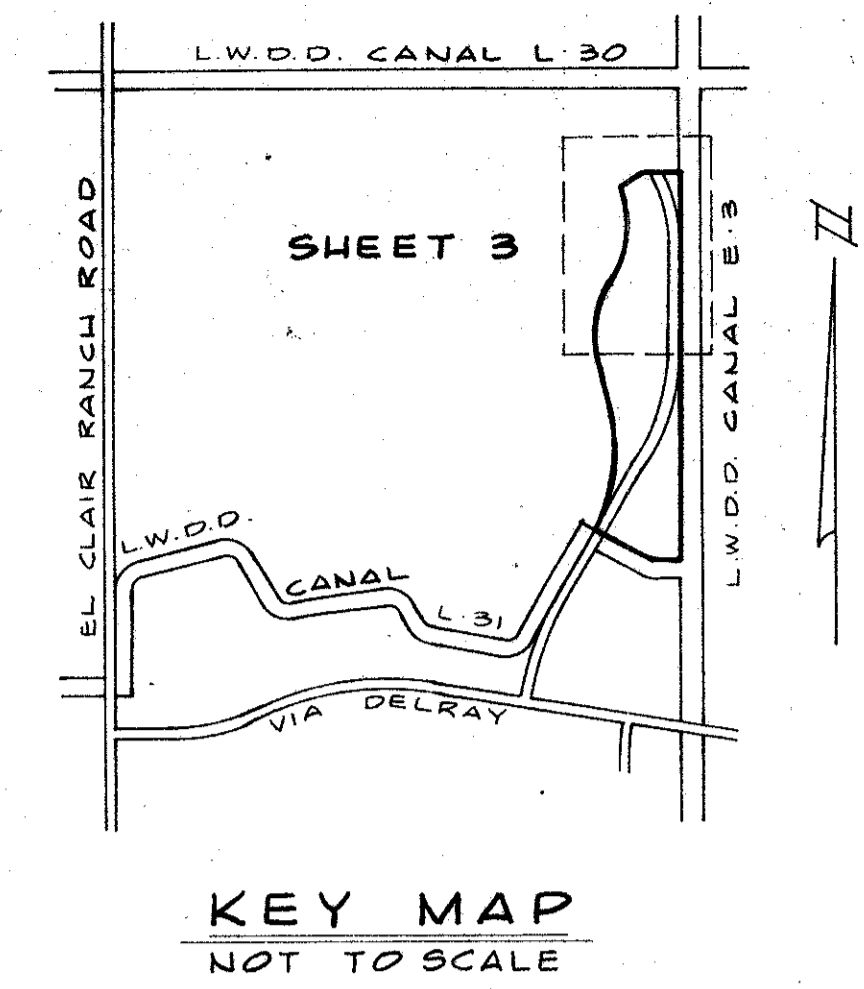
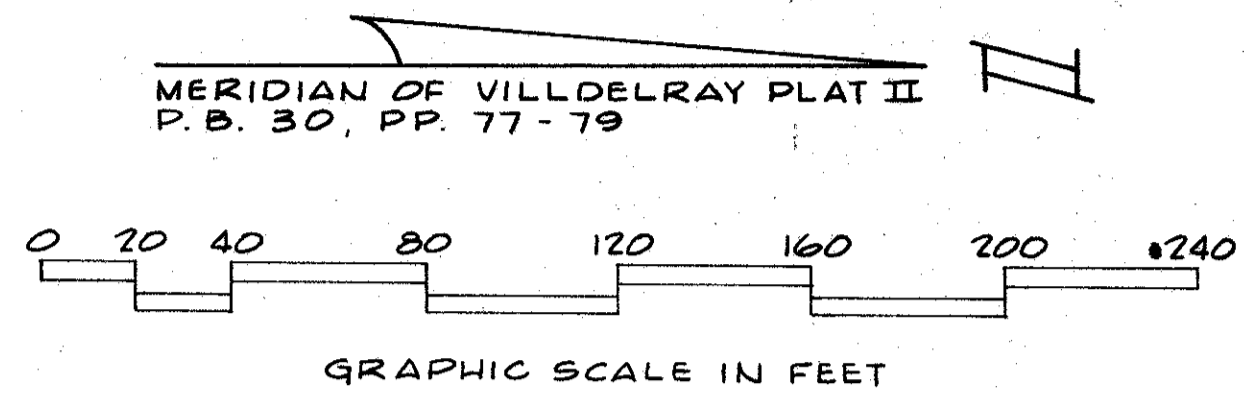


A PLANNED UNIT DEVELOPMENT
VILLADELRAY - SECTION 7, 8 AND 9
 PALM BEACH COUNTY, FLORIDA
 IN 3 SHEETS - SHEET NO. 3

175



0324-004

VILLADELRAY #78+9

Field Book No.	Pg.
Design	J.C. YESTE
Drawn	E.M. SIKORA
Checked	

ROBERT E. DINN & ASSOCIATES, INC.
 ENGINEERS, PLANNERS & SURVEYORS
 WEST PALM BEACH, FLORIDA

A PLANNED UNIT DEVELOPMENT
VILLADELRAY
 SECTION 7, 8 AND 9
 PALM BEACH COUNTY, FLORIDA
 IN 3 SHEETS - SHEET NO. 3

77-1161
Scale: 1" = 40'
Date: MARCH 1978
Sheet of 3 3
File No. BF-2268

34
 175